

MX2615N  
MX3115N

100<sup>th</sup>  
ANNIVERSARY

## WORKGROUP COLOUR DOCUMENT SYSTEMS



THE RENAISSANCE OF COLOUR

the **SHARP** experience

see what happens

**SHARP**

A full colour ledger-size document system that will meet virtually all of your business needs.

## MX2615N/MX3115N: FEATURE-RICH AND A STRONG VALUE

Boost workgroup efficiency and productivity with Sharp's new **MX2615N/MX3115N full colour MULTI-FUNCTION DOCUMENT SYSTEMS**, designed to deliver amazing image quality and consistent day-to-day performance while also being easy to afford. Features include **STANDARD PCL®6** compatible printing language, a **HIGH RESOLUTION TOUCH-SCREEN** colour display with graphical user navigation for easy operation, and a **TOTAL PAPER CAPACITY UP TO 3,100 SHEETS**. Equipped with a powerful **TRUE MULTI-TASKING** controller that allows quick processing of even complex print jobs, the **MX2615N/MX3115N** produces **HIGH-QUALITY**, vibrant colour documents in-house, helping you save time and money. Sharp's advanced device management tools make it simple for businesses to control system access, colour usage and costs. To make integration with network applications easier than ever, the **MX2615N/MX3115N** supports the **SHARP OSA® DEVELOPMENT PLATFORM**. Sharp's industry-leading security helps assure the confidentiality of your intellectual property.

That's the **SHARP DIFFERENCE**.



VERSATILE

MULTI-FUNCTION

POWERFUL

MULTI-TASKING

INTUITIVE

Advanced features plus multi-function capabilities allow you to meet tomorrow's document needs today.

- Powerful **true, 600 MHz multi-tasking** full colour document system
- **High-resolution 7" (diagonal) touch-screen** colour display with graphical navigation
- Standard **PCL®6 compatible printing system** with **available PostScript®3 compatible and XPS options\***
- **600 x 600 dpi** printing provides clear, crisp image output
- Advanced **ImageSEND™** function scans documents to USB devices, network folders, E-mail and more
- ImageSEND function scans documents at up to **50 images per minute** in both black and colour
- Convenient **Document Filing System** with **thumbnail view** and **image preview** features
- Available **500 + 2,000 sheet tandem paper drawer**, for an online **capacity of 3,100 sheets**



- Supports the Sharp OSA development platform, enabling businesses to streamline document workflow and help **enhance productivity with speed and efficiency\***
- **Flexible paper handling** system feeds up to 110 lb index through paper trays and up to 140 lb. index through the bypass tray
- Optional pull-out **QWERTY keyboard** for enhanced ease-of-use
- **Super G3 fax** option with intelligent inbound routing
- Supports Sharp's **award-winning** security platform with **standard 256-bit data encryption** and up to **7 times data overwrite protection**
- Convenient **end-of-lease feature** overwrites all job data, user data and network information at trade-in time
- **Remote front panel feature** allows users and administrators to view and control machine operations from a PC workstation
- **Environmentally-friendly design** offers low power consumption, fast warm up, compact design and long-life parts and supplies

*\*Some features require optional equipment and/or software.*





## INTUITIVE FEATURES HELP BUSINESSES SOAR TO NEW HEIGHTS



High-resolution touch screen with Stylus pen for easy point-and-touch operation



Available paper capacity stores up to a maximum of 3,100 sheets with options



Sharp's easy-to-use Document Filing System with thumbnail preview

### Sharp's MX2615N/MX3115N will help elevate workgroup performance and meet on-the-go business demands.

#### The Flexibility and Performance You Need

With a **high-resolution touch screen colour display** and a powerful **600 MHz multi-tasking controller**, the MX2615N/MX3115N colour workgroup document system can help elevate your office productivity to the next level. The intuitive menu navigation system with razor sharp graphics makes operating the MX2615N/MX3115N simple and easy. With Sharp's true multi-tasking controller, complex colour print jobs can be processed quickly, even while documents are being scanned. But that's just the beginning – with a standard **100-sheet reversing document feeder**, automatic duplexing, electronic sorting and integrated offset stacking, you'll complete even large jobs in a snap.

#### High-Quality Output You Can Rely On

The MX2615N/MX3115N colour workgroup document system combines enhanced second-generation micro-fine toner technology with **600 x 600 dpi** print resolution to produce documents with crisp, clear images and dazzling high-quality colours. **Sharp's Image Stabilization System** helps ensure uniform density and colour balance for beautiful output page after page.

#### Professional Performance Your Business Can Depend On

Sharp's MX2615N/MX3115N colour workgroup document system delivers professional performance and optimal productivity to satisfy your daily production needs. Copy/print **speeds up to 31 ppm** (in both colour or B&W) help you to meet project deadlines with time to spare. The flexible paper handling system can feed up to 110 lb index stock through the paper trays and up to 140 lb index through the bypass tray. With available on-line paper capacity of up to 3,100 sheets, the MX2615N/MX3115N is ready when you are.

#### Innovative Document Filing For Easy Access

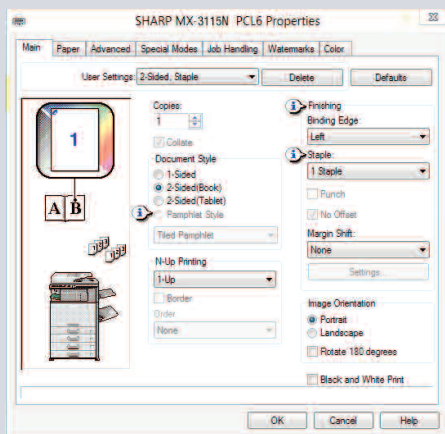
Sharp's easy-to-use **Document Filing System** can store frequently used files like forms and templates. Plus, with Sharp's **thumbnail preview** mode, stored jobs can be located and retrieved quickly. An advanced backup system and PIN-access security helps ensure that your files are safe.

#### Advanced Finishing Adds The Final Touch

The MX2615N/MX3115N also offers a compact, high-performance finisher with 3-position stapling and an available 3-hole punch that can give your documents a professional look and feel. In addition, an optional long paper feeding tray adds the availability of banner printing within the compact footprint of the MX2615N/MX3115N.



# ENHANCED WORKFLOW FEATURES INCREASE PRODUCTIVITY



Sharp's easy-to-use print drivers make accessing all of the MX2615N/MX3115N colour features simple and easy.



USB 2.0 port is located on the front panel for easy access\*

Impressive workflow efficiency with leading edge features that help deliver optimum results.

## Exceptional Print Quality with Professional Finishing

With the MX2615N/MX3115N, your business can produce brilliant, high-quality colour documents, as well as crisp B&W documents. With standard PCL6 compatible printing language, available PostScript 3 compatible and XPS options, documents are printed with superb performance and efficiency. Plus, with **600 x 600 dpi** resolution, all of your documents will look great! **Powerful finishing features** include 3-position stapling for up to 50 sheets and 3-hole punching.\*

## A True Multi-Tasking Document System

The MX2615N/MX3115N features a **high-performance**, multi-tasking controller that delivers copy, scan, fax and print jobs continuously for optimum efficiency. Some controllers only perform one operation at a time, but the MX2615N/MX3115N continually processes incoming jobs even while existing jobs are output. The result? A workflow that virtually never slows down – even at crunch time.

## Direct USB Printing Adds Convenience and Portability

With Direct USB printing, users can print colour or B&W image files in a variety of popular formats directly from USB memory devices such as a ThumbDrive™ or ClipDrive™.\* Need to print PDF brochures in a hurry for a big meeting? It's easy with the MX2615N/MX3115N. Just plug in your portable USB memory device, select the file, and your job prints immediately.

# FLEXIBLE DOCUMENT DISTRIBUTION



## Integrated Network Scanning

With Sharp's powerful **ImageSend™** technology, you get one-touch distribution features that centralize document workflow, help reduce mail costs and save time. With up to **seven destinations** – E-mail, Desktop, FTP, Network Folders (SMB), USB, Fax and Internet Fax – getting your document where it needs to go is as easy as pushing a button. For increased efficiency, **Send to Group** mode allows you to mix group broadcast to E-mail, Fax, and Internet Fax.\*

## Convenient E-mail Distribution

With Lightweight Directory Access Protocol (LDAP), there's no need to manually enter a recipient's complete E-mail address. Simply enter the first few characters and the MX2615N/MX3115N automatically searches and displays a list of matching names. **Unique File Naming** allows users to enter specific file names with custom subject fields, for easy recall of stored files. With **Sharpdesk®** personal document management software, users can organize scanned documents and integrate them into everyday workflow.

## Integrated Super G3 Fax and Internet Fax

Add powerful facsimile capability with the optional Super G3 fax module, which features automatic stapled/copied receptions, and Inbound Fax Routing to E-mail. Sharp's innovative PC fax driver enables users to send fax documents right from their desktop. For Internet fax operation, add the optional B&W Internet Fax expansion kit.

## Versatile Application Integration

To help streamline document workflow and **enhance productivity**, the MX2615N/MX3115N supports the Sharp OSA development platform. This third generation technology allows users to **interact with network applications faster** than ever before – and right from the machine LCD panel! Sharp OSA technology uses industry-standard network protocols, such as XML and SOAP, allowing the MX2615N/MX3115N to communicate with many different applications. The Sharp OSA development platform is also scalable, so as your workflow needs change, Sharp's application integration can change as well.



\*Some features require optional equipment and/or software.





## ADVANCED DEVICE MANAGEMENT MAXIMIZES PRODUCTIVITY



Separate print buttons for B&W and Colour allow users to selectively manage use of colour



Embedded web page



Sharp Remote Device Management

The MX2615N/MX3115N implements versatile device management capabilities through user-friendly software to achieve ultimate efficiency.

### Sharp Remote Device Management (SRDM)\*

Make management of your MX2615N/MX3115N simple and straight forward with Sharp Remote Device Management (SRDM). This easy-to-use software allows you to take control of the versatile system features and simplifies installation and management.

- With **Printer Status Monitor**, network users can view printer conditions, check paper levels, toner, and more, all through an easy-to-use interface.
- With advanced **Sharp Remote Device Manager\***, administrators can easily manage the setup, configuration, device settings, cloning and more! Advanced features such as **Remote Front Panel** allow administrators and support personnel to view and control the LCD panel of the machine remotely from virtually any PC on the network! Plus, with event-driven, real-time service alerts, administrators and supervisors can achieve higher productivity. Now, it is easier than ever to view service logs, click counts, history reports and more.
- Experience the convenience of an **Embedded Web Page** right from your desktop! This advanced web-based management tool allows users to create and manage their own network scanning destinations, profiles and web-links. Administrators can access device settings, colour control, account information and security settings.

### Take Charge of Colour Usage and Costs

With Sharp's **device management system**, administrators and supervisors can define user groups on the MX2615N/MX3115N to manage and restrict features, such as colour copying, scanning or printing. Easily set up a custom user group to manage page counts (copy, print, scan or fax operations) for both colour and B&W. This helps to simplify cost management of imaging. The MX2615N/MX3115N can **store profiles for up to 1000 users**.

### 24/7 Online Training with My Sharp™

Managing all of the advanced features of your Sharp product is simple and easy. This dedicated customer training website is customized to your MX2615N/MX3115N and allows you to locate resources and find information specific to your configuration, truly helping you maximize your investment.



\*Not available at time of launch.

# HEIGHTENED SECURITY HELPS PROTECT YOUR BUSINESS

To help protect your data, the MX2615N/MX3115N offers several layers of security, making Sharp the optimum choice to help protect employees privacy and intellectual property.\* As a leader in office equipment security, Sharp makes it easy for virtually any business or government entity to safely deploy digital copying, printing, scanning and faxing.

## Authority Groups

Advanced account management enables administrators to set authority groups for access to features of the MX2615N/MX3115N. Administrators can control which department, for instance, has full access to copying, printing, scanning and/or fax. Walk-up users enter a Code, Local Name and Password, or LDAP User Authentication to access the features assigned to their group.

## Data Overwrite and Encryption

To help protect your data, the MX2615N/MX3115N can encrypt document data using **AES (Advanced Encryption Standard) 256-bit encryption**. The MX2615N/MX3115N can also erase the temporary memory on the hard drive by overwriting the encrypted data up to seven times, offering an unprecedented level of assurance. A convenient **End-of-Lease feature** overwrites all data, including document filing, user data, job status, date and address book.

## Network Scanning Access Control

To help protect your network from unauthorized e-mail communications, the MX2615N/MX3115N supports **User Authentication**, requiring users to login before performing any network scanning operations.

## Control Device Access Over the Network

To help restrict access to the device over the network, the MX2615N/MX3115N offers IPsec, SMB and extended support for **SSL Encryption** (Secure Sockets Layer), **IP/MAC address** filtering, IEEE 802.1x authentication, protocol enable/disable and port management for maximum security.

*\*Some features require optional equipment and/or software.*

## Documents Remain Confidential

The MX2615N/MX3115N offers **Confidential Printing**, which when used, requires users to enter a PIN code in order to print a queued document. To help protect your direct-print documents from unauthorized viewing, the MX2615N/MX3115N offers encrypted PDF printing and scanning. Additionally, **Secure Fax Release** ensures received fax documents are held in memory until an authorized user enters a PIN code.

## Tracking and Auditing Information

Legislation and industry policies require companies to be more aware of information flow from their offices. Sharp offers both built-in and additional hardware/software which allows users to control, access and track usage of each device on the network.

## Data Security Kit (Optional)

For maximum protection, the optional data security kit offers additional features, such as Data Overwrite at Power Up, Document Filing access control and Restricted Status Display.

These scalable security offerings aim to protect your intellectual property, preserve confidential information and help your business to meet regulatory requirements, such as the Personal Information Protection and Electronic Documents Act (PIPEDA).

## ENVIRONMENTAL COMMITMENT



### An Environmentally Responsible Approach to Product Design

The MX2615N/MX3115N utilizes Sharp's advanced **micro-fine toner technology**, which offers a lower consumption rate and produces less waste than conventional toners, resulting in longer replacement intervals. Sharp supplies are packaged using fully **recyclable materials**. Long-life consumable parts help minimize service intervals and downtime, resulting in lower operating costs. With two different energy saving modes, power can be reduced or shut off at set intervals. All Sharp document systems are **ENERGY STAR® certified** and **RoHS compliant** to restrict the use of hazardous substances.

### Toner Recycling Program

As part of our commitment to helping preserve the environment, Sharp offers customers a toner recycling program for all Sharp copiers and MFP products. Sharp encourages customers to recycle their used Sharp toner cartridges by providing a pre-paid shipping label for their return to our facility. Please visit <http://www.sharp.ca/en-CA/AboutUs/SharpAndTheEnvironment/Recycling.aspx> to learn more.

### Environmental Leadership

As a testament to our commitment to the environment, Sharp is a three-time winner of the **ENERGY STAR®** annual **Excellence in Energy Proficiency Product Design**. Sharp was also a previous recipient of the *Excellence in Partnership Green Contractor Award* and the **Evergreen Award** from the General Services Administration (GSA) and the Coalition for Government Procurement. These awards recognize environmentally responsible businesses and their efforts on recycling, waste reduction and affirmative procurement practices.

### Global Initiatives

Sharp is committed to environmental sustainability and corporate responsibility including planning, design, manufacturing, distribution and product end-of-life management. For more information about Sharp's environmental leadership including information about energy efficient products, electronics or toner cartridge recycling, please visit <http://www.sharp.ca/en-CA/AboutUs/SharpAndTheEnvironment.aspx> to learn more.



# MX2615N/MX3115N SPECIFICATIONS

## Main Specifications

|                                        |                                                                                                                                                                                                                                                                                                                                                                                                                                                                                                                                                                                 |          |          |        |
|----------------------------------------|---------------------------------------------------------------------------------------------------------------------------------------------------------------------------------------------------------------------------------------------------------------------------------------------------------------------------------------------------------------------------------------------------------------------------------------------------------------------------------------------------------------------------------------------------------------------------------|----------|----------|--------|
| MX2615N                                | Includes multi-tasking controller, 320 GB HDD with document filing system, PCL6 network printing, network scanning, 100-sheet RSPF, auto-duplex, one 500-sheet paper drawers and 100-sheet bypass. Black and colour developer is included in the box.                                                                                                                                                                                                                                                                                                                           |          |          |        |
| MX3115N                                |                                                                                                                                                                                                                                                                                                                                                                                                                                                                                                                                                                                 |          |          |        |
| Type                                   | Desktop, colour multi-function digital document system                                                                                                                                                                                                                                                                                                                                                                                                                                                                                                                          |          |          |        |
| Display                                | 7" (diagonally measured) colour dot matrix touch panel. 800 x 480 dots (W-VGA)                                                                                                                                                                                                                                                                                                                                                                                                                                                                                                  |          |          |        |
| Functions                              | Copy, print, network print, network scan, document filing and fax <sup>1</sup>                                                                                                                                                                                                                                                                                                                                                                                                                                                                                                  |          |          |        |
| Copy System                            | Dry electrostatic transfer/Dual component developer/Magnetic brush development/OPC drums/Belt type fusing/white LED exposure                                                                                                                                                                                                                                                                                                                                                                                                                                                    |          |          |        |
| Originals                              | Sheets and bound documents                                                                                                                                                                                                                                                                                                                                                                                                                                                                                                                                                      |          |          |        |
| Max Original Size                      | 11" x 17"                                                                                                                                                                                                                                                                                                                                                                                                                                                                                                                                                                       |          |          |        |
| Copy Size                              | Min. 5.5" x 8.5", Max. 11" x 17" + 12" x 18"                                                                                                                                                                                                                                                                                                                                                                                                                                                                                                                                    |          |          |        |
| Copy Speed                             | 26/31 ppm B&W/Colour (8.5" x 11")                                                                                                                                                                                                                                                                                                                                                                                                                                                                                                                                               |          |          |        |
| Multiple Copy                          | Max. 999 copies                                                                                                                                                                                                                                                                                                                                                                                                                                                                                                                                                                 |          |          |        |
| First Copy Time (Seconds) <sup>2</sup> | MX2615N                                                                                                                                                                                                                                                                                                                                                                                                                                                                                                                                                                         |          | MX3115N  |        |
|                                        | Black                                                                                                                                                                                                                                                                                                                                                                                                                                                                                                                                                                           | Colour   | Black    | Colour |
|                                        | Platen Glass                                                                                                                                                                                                                                                                                                                                                                                                                                                                                                                                                                    | 5.9 8.1  | 5.8 7.9  |        |
|                                        | Doc. Feeder                                                                                                                                                                                                                                                                                                                                                                                                                                                                                                                                                                     | 9.1 11.6 | 9.1 11.6 |        |
| Warm Up Time                           | 18 seconds or less <sup>3</sup>                                                                                                                                                                                                                                                                                                                                                                                                                                                                                                                                                 |          |          |        |
| Magnification                          | 25% to 400% in 1% increments (with document feeder 25%-200%)                                                                                                                                                                                                                                                                                                                                                                                                                                                                                                                    |          |          |        |
| Original Feed                          | 100-sheet RSPF with original size detection                                                                                                                                                                                                                                                                                                                                                                                                                                                                                                                                     |          |          |        |
| Scan Speed                             | Copy mode: Up to 50 opm (B&W) @ 600 x 400 dpi; Up to 36 opm (Colour) @ 600 x 600 dpi.<br>Network Scan: Up to 50 opm (B&W or Colour) 200 x 200 dpi. All times based on single-side letter originals.                                                                                                                                                                                                                                                                                                                                                                             |          |          |        |
| Original Sizes                         | 5.5" x 8.5", 8.5" x 11", 8.5" x 11" R, 8.5" x 14", 11" x 17" (13-32 lb. bond)                                                                                                                                                                                                                                                                                                                                                                                                                                                                                                   |          |          |        |
| Paper Capacity                         | Std. 600 sheets / Max. 3,100 sheets                                                                                                                                                                                                                                                                                                                                                                                                                                                                                                                                             |          |          |        |
| Paper Feed System                      | Standard: (1) 500-sheet paper drawer (letter/legal/ledger/statement size) and 100-sheet bypass tray (letter/legal/ledger/statement/envelope size). Optional: Single, double or triple drawer paper deck (500-sheets each drawer), tandem paper deck (2,500-sheets), letter/legal/ledger/statement size. See your local dealer for configurations.                                                                                                                                                                                                                               |          |          |        |
| Paper Types                            | Paper drawers: 16 lb. bond -110 lb. index. Other paper types include plain, pre-printed, recycled, pre-punched, letterhead and colour paper. Bypass Tray: 16-28 lb. bond (plain paper), 13-16 lb. bond (thin paper), 28 lb. bond-140 lb. index (heavy paper), 20-24 lb. bond (Monarch/Com-10 envelope), tab paper (letter size only). Also label paper, gloss paper, pre-printed, recycled, pre-punched, letterhead, colour paper and OHP film.                                                                                                                                 |          |          |        |
| Duplexing                              | Standard automatic duplex copying and printing                                                                                                                                                                                                                                                                                                                                                                                                                                                                                                                                  |          |          |        |
| CPU                                    | Multi-processor controller                                                                                                                                                                                                                                                                                                                                                                                                                                                                                                                                                      |          |          |        |
| Interface                              | RJ-45 Ethernet (10/100/1000Base-T), USB 2.0 (2 host ports, front and rear), USB 2.0 (1 device ports)                                                                                                                                                                                                                                                                                                                                                                                                                                                                            |          |          |        |
| Memory                                 | Standard 1 GB + 2 GB option <sup>4</sup>                                                                                                                                                                                                                                                                                                                                                                                                                                                                                                                                        |          |          |        |
| Hard Disk Drive                        | 320 GB                                                                                                                                                                                                                                                                                                                                                                                                                                                                                                                                                                          |          |          |        |
| Copy Resolution                        | Scan: B&W/colour: 600 dpi; Copy Output: B&W/colour: 600 dpi                                                                                                                                                                                                                                                                                                                                                                                                                                                                                                                     |          |          |        |
| Colour Modes                           | Auto colour control, Full Colour Mode, Monochrome (B/W)                                                                                                                                                                                                                                                                                                                                                                                                                                                                                                                         |          |          |        |
| Exposure Control                       | Modes: Automatic Text, Text/Photo, Text/Printed-Photo, Printed-Photo, Photo, Map, Pale-Colour Document. Settings: Auto exposure control or 9 step manual exposure.                                                                                                                                                                                                                                                                                                                                                                                                              |          |          |        |
| Halftone                               | 256 gradations/2 levels (monochrome)                                                                                                                                                                                                                                                                                                                                                                                                                                                                                                                                            |          |          |        |
| Copy Features                          | Scan-Once Print-Many, electronic sorting, offset-stacking, Auto Colour Sensing (ACS), Auto Paper Sensing (APS), Auto Magnification Sensing (AMS), auto tray switching, rotation copy, reserve copy, tandem copy, book copy, margin shift, tab-paper insertion, edge erase, centre erase, dual page copy, cover pages, insert pages, OHP insertion, job build, card shot, multi-page enlargement, mirror image, black-white reversal, centering, proof copy, 2-in-1/4-in1, pamphlet, photo repeat, document filing, account management, job programs, date/character/page stamp. |          |          |        |
| Account Control                        | Up to 1000 users. Supports user-number authentication (on device), login name/password (on device) or login name/password (on device via LDAP server) for Copy, Print, Scan, Fax and document management.                                                                                                                                                                                                                                                                                                                                                                       |          |          |        |
| Output Tray Capacity                   | Main output tray (top) 400 sheets (face down); optional eject tray (right 1 side) 100 sheets (face down)                                                                                                                                                                                                                                                                                                                                                                                                                                                                        |          |          |        |
| Firmware Management                    | Flash ROM with local (USB), network update capability and firmware update 1 to N with SRDM (Sharp Remote Device Management) <sup>5</sup>                                                                                                                                                                                                                                                                                                                                                                                                                                        |          |          |        |
| Configuration Method                   | Web-based management with user/administrator level login, cloning (1 to N) with SRDM and remote front panel access                                                                                                                                                                                                                                                                                                                                                                                                                                                              |          |          |        |

## Main Specifications (continued)

|                                |                                                                                                                                                                             |
|--------------------------------|-----------------------------------------------------------------------------------------------------------------------------------------------------------------------------|
| <b>Service/Maintenance</b>     | Remote front panel access, remote access to service logs and click counts                                                                                                   |
| <b>Accessibility Features</b>  | Adjustment of Key Touch-Send and Speed, Concave Key, Document Feeder Free Stop, Job Programs, Remote Front Panel, Universal Grip for Paper Trays and Disable Screen Timeout |
| <b>Environmental Standards</b> | The International Energy Star Program (EPA) Ver. 1.2, Law on Promoting Green Purchasing <sup>6</sup> . European RoHS (Restriction of Hazardous Substances)                  |
| <b>Power</b>                   | AC 100-127 VAC, 60 Hz, 12 Amps                                                                                                                                              |
| <b>Power Cons.</b>             | Maximum: 1440 W                                                                                                                                                             |
| <b>Weight</b>                  | Approx. 166.7 lbs. (base model)                                                                                                                                             |
| <b>Dimensions</b>              | 24" (w) x 25.5" (d), x 33" (h)                                                                                                                                              |

## Network Printing System

|                                   |                                                                                                                                                                                                                                                                                                                                                                                                                                                                                                                                                                                                                                                                                                                                   |
|-----------------------------------|-----------------------------------------------------------------------------------------------------------------------------------------------------------------------------------------------------------------------------------------------------------------------------------------------------------------------------------------------------------------------------------------------------------------------------------------------------------------------------------------------------------------------------------------------------------------------------------------------------------------------------------------------------------------------------------------------------------------------------------|
| <b>PDL</b>                        | Standard PCL6 compatible, optional PostScript <sup>®</sup> 3™ compatible, optional XPS <sup>®</sup>                                                                                                                                                                                                                                                                                                                                                                                                                                                                                                                                                                                                                               |
| <b>Resolution</b>                 | 600 x 600 dpi                                                                                                                                                                                                                                                                                                                                                                                                                                                                                                                                                                                                                                                                                                                     |
| <b>Print Speed</b>                | 26/31 pages per minute (8.5" x 11")                                                                                                                                                                                                                                                                                                                                                                                                                                                                                                                                                                                                                                                                                               |
| <b>Print Drivers</b>              | Windows Server <sup>®</sup> 2003-2008, Windows <sup>®</sup> XP, Windows XP x64, Windows Server x64, Windows Vista <sup>®</sup> , Windows Vista <sup>®</sup> x64, Windows <sup>®</sup> 7, MAC OS <sup>®</sup> , OSX (including 10.4.11, 10.5-10.5.8, 10.6-10.6.8, 10.7-10.7.4), all MAC PPD                                                                                                                                                                                                                                                                                                                                                                                                                                        |
| <b>Features</b>                   | Auto configuration, continuous printing, electronic sorting, offset stacking, N-up printing, duplex printing, transparency inserts, margin shift, image rotation, different cover page, poster print, job bypass print, job retention, confidential print, proof print, user authentication, image stamp and watermarks, multiple pamphlet, network tandem print, carbon copy print mode, different cover page/last page/other page, form overlay, tab paper settings, tab printing, chapter inserts, page Interleave and bar code font printing (requires MXPFI10 bar code font kit)<br>File Types: TIFF, JPEG, PCL, PRN, TXT, PDF, Encrypted PDF, Postscript and XPS <sup>®</sup> Methods: FTP, Web page, E-mail and USB memory |
| <b>Direct Printing (optional)</b> |                                                                                                                                                                                                                                                                                                                                                                                                                                                                                                                                                                                                                                                                                                                                   |
| <b>Resident Fonts</b>             | 80 outline fonts (PCL), 136 fonts (PS)                                                                                                                                                                                                                                                                                                                                                                                                                                                                                                                                                                                                                                                                                            |
| <b>Interface</b>                  | RJ-45 Ethernet 10/100/1000 Base-T, USB 2.0                                                                                                                                                                                                                                                                                                                                                                                                                                                                                                                                                                                                                                                                                        |
| <b>Operating Systems</b>          | Windows Server 2003-2008, Windows XP, Windows Vista, Windows 7, MAC OSX 10.4.11, 10.5-10.5.8, 10.6-10.6.8, 10.7-10.7.4 Novell <sup>®</sup> Netware <sup>®</sup> 3x, 4x, 5x, Sun <sup>®</sup> OS 4.1x, Solaris <sup>®</sup> 2x, Unix <sup>®</sup> , Linux <sup>®</sup> and Citrix <sup>®</sup> (Metaframe, Presentation Server 4, 4.5) and Windows Terminal Services. <sup>1</sup>                                                                                                                                                                                                                                                                                                                                                 |
| <b>Network Protocols</b>          | TCP/IP (IPv4, IPv6, IPSEC) SSL (HTTP, IPP, FTP), SNMPv3, 802.1x for Novells and Unix. LPD and LPR for UNIX. IPX/SPX <sup>®</sup> for Novell environments. EtherTalk <sup>®</sup> , AppleTalk <sup>®</sup> for Macintosh <sup>®</sup> environments. <sup>1</sup>                                                                                                                                                                                                                                                                                                                                                                                                                                                                   |
| <b>Printing Protocols</b>         | LPR, IPP, IPPS, PAP, Raw TCP (port 9100), FTP and Novell Pserver/Rprinter                                                                                                                                                                                                                                                                                                                                                                                                                                                                                                                                                                                                                                                         |
| <b>Network Security</b>           | IP/Mac address filtering, protocol filtering, port management, user authentication and document administration. <sup>1</sup>                                                                                                                                                                                                                                                                                                                                                                                                                                                                                                                                                                                                      |
| <b>Security Standards</b>         | IEEE-2600™ 2008 for MFP devices, DoD (NSTISSP) #11, DoD Directive 8500.2, DoD (DISA) <sup>1</sup>                                                                                                                                                                                                                                                                                                                                                                                                                                                                                                                                                                                                                                 |

## Network Scanning System

|                               |                                                                                                                                                                  |
|-------------------------------|------------------------------------------------------------------------------------------------------------------------------------------------------------------|
| <b>Scan Modes</b>             | Standard: Colour, monochrome, greyscale                                                                                                                          |
| <b>Max Original Size</b>      | 11" x 17"                                                                                                                                                        |
| <b>Optical Resolution</b>     | 600 dpi                                                                                                                                                          |
| <b>Output Modes</b>           | 600 dpi, 400 dpi, 300 dpi, 200 dpi, 100 dpi                                                                                                                      |
| <b>Image Formats</b>          | Monochrome: TIFF, PDF, Encrypted PDF, XPS<br>Colour: Greyscale, Colour TIFF, JPEG, PDF, Encrypted PDF, XPS<br>Internet Fax: TIFF-FX, TIFF-F, TIFF-S <sup>1</sup> |
| <b>Image Compression</b>      | Monochrome Scanning: Uncompressed, G3 (MH), G4 (MR/MMR)<br>Colour/Greyscale: JPEG (high, middle, low)<br>Internet Fax mode: MH/MMR (option)                      |
| <b>Scan Destinations</b>      | E-mail, Desktop, FTP, Folder (SMB), USB, Internet fax (option), Super G3 fax (option)                                                                            |
| <b>One-touch Destinations</b> | Up to 1000 (combined scan destinations)                                                                                                                          |
| <b>Group Dest.</b>            | Up to 500                                                                                                                                                        |
| <b>Programs</b>               | 48 (combined)                                                                                                                                                    |
| <b>Max. Jobs</b>              | Up to 94                                                                                                                                                         |
| <b>Network Protocols</b>      | TCP/IP and SSL (includes HTTP, SMTP, LDAP, FTP, POP3), SMB, ESMTP and 802.1x.                                                                                    |
| <b>Network Security</b>       | E-mail server user authentication for LDAP and Active Directory                                                                                                  |
| <b>Software</b>               | Sharpdesk <sup>®</sup> desktop document management software (1 user license)                                                                                     |

## B&W Super G3 Fax Kit (option)

|                                 |                                                                                                                                                                                                                                                                                                                                               |
|---------------------------------|-----------------------------------------------------------------------------------------------------------------------------------------------------------------------------------------------------------------------------------------------------------------------------------------------------------------------------------------------|
| <b>Transmission Mode</b>        | Super G3, G3                                                                                                                                                                                                                                                                                                                                  |
| <b>Modem Speed</b>              | 33.6 KBPS <sup>3</sup>                                                                                                                                                                                                                                                                                                                        |
| <b>Compression Methods</b>      | JBIG, MMR, MR, MH                                                                                                                                                                                                                                                                                                                             |
| <b>Scanning Method</b>          | Sheet fed simplex or duplex or book                                                                                                                                                                                                                                                                                                           |
| <b>Max. Transmit Resolution</b> | 400 dpi                                                                                                                                                                                                                                                                                                                                       |
| <b>Transmit Speed</b>           | Approx. 2 seconds with Super G3/JBIG <sup>4</sup>                                                                                                                                                                                                                                                                                             |
| <b>Auto Dialing</b>             | Up to 1000 (combined scan destinations)                                                                                                                                                                                                                                                                                                       |
| <b>Group Dial/Destinations</b>  | Up to 500                                                                                                                                                                                                                                                                                                                                     |
| <b>Inbound Fax Routing</b>      | Forwards received fax data to E-mail                                                                                                                                                                                                                                                                                                          |
| <b>Long Length Originals</b>    | Up to 31.5" (for transmission)                                                                                                                                                                                                                                                                                                                |
| <b>Programs</b>                 | 48 (combined)                                                                                                                                                                                                                                                                                                                                 |
| <b>Memory</b>                   | 1 GB (shared)                                                                                                                                                                                                                                                                                                                                 |
| <b>Halftone</b>                 | 256 levels                                                                                                                                                                                                                                                                                                                                    |
| <b>Features</b>                 | Quick on-line transmission, direct transmission, F-Code transmission/reception, rotate transmission, in-bound fax routing, anti-junk fax reception, automatically staple received faxes, secure fax release, out of paper memory reception, auto redial, 2-in-1 reception, duplex reception transaction reports, activity reports and PC fax. |

## Inner Finisher (option)

|                           |                                                                                                        |
|---------------------------|--------------------------------------------------------------------------------------------------------|
| <b>Type</b>               | Built-in finisher (hole-punch unit option)                                                             |
| <b>Output Capacity</b>    | 500 sheets (letter/statement) or 250 sheets (ledger/legal size)                                        |
| <b>Output Delivery</b>    | Face down                                                                                              |
| <b>Stapling Media</b>     | Plain paper, (letter, legal, or ledger size)                                                           |
| <b>Stapling Positions</b> | 1 front, 1 rear, or both                                                                               |
| <b>Power Source</b>       | Supplied from main unit                                                                                |
| <b>Stapling</b>           | Up to 50 sheets (letter size) or 30 sheets (legal, ledger or mixed)                                    |
| <b>Stapled Sets</b>       | 30 bundles or 500 sheets (letter or statement size) or 30 bundles or 250 sheets (legal or ledger size) |
| <b>Hole Punching</b>      | Optional hole punch unit MXPNI1B (2 holes/3 holes)                                                     |
| <b>Weight</b>             | Approx. 26.5 lbs.                                                                                      |
| <b>Dimensions</b>         | 24.75" (w) x 23.5" (d) x 8" (h) (includes extended tray)                                               |

## Optional Equipment

|                            |                                                                |
|----------------------------|----------------------------------------------------------------|
| <b>MXDE12</b>              | Stand/1 x 500 Sheet Paper Drawer                               |
| <b>MXDE13</b>              | Stand/2 x 500 Sheet Paper Drawer                               |
| <b>MXDE14</b>              | Stand/3 x 500 Sheet Paper Drawer                               |
| <b>MXDE20</b>              | Stand/500 + 2,000 Sheet Tandem Paper Drawer                    |
| <b>MX36ABD</b>             | Rolling Cabinet Base                                           |
| <b>MXFN17</b>              | Finisher                                                       |
| <b>MXPN11B</b>             | 3 Hole Punch Unit (Requires MXFN17)                            |
| <b>MXTR13N</b>             | Exit Tray Unit                                                 |
| <b>MXPK11</b>              | PostScript 3 Kit                                               |
| <b>MXPUX1</b>              | XPS Expansion Kit <sup>6</sup>                                 |
| <b>MXFX11</b>              | Fax Expansion Kit                                              |
| <b>MXFWX1</b>              | Internet Fax Kit                                               |
| <b>MXPF10</b>              | Bar Code Font Kit                                              |
| <b>MXAMX1</b>              | Application Integration Module                                 |
| <b>MXAMX2</b>              | Application Communication Module                               |
| <b>MXAMX3</b>              | External Accounting Module                                     |
| <b>MXFR40U<sup>5</sup></b> | Commercial Data Security Kit (not available at time of launch) |
| <b>MXKB14N</b>             | Keyboard                                                       |
| <b>MXLT10</b>              | Long Paper Feeding Tray                                        |

## Supplies

|                 |                               |
|-----------------|-------------------------------|
| <b>MX36NTBA</b> | Black Toner Cartridge         |
| <b>MX36NTCA</b> | Cyan Toner Cartridge          |
| <b>MX36NTMA</b> | Magenta Toner Cartridge       |
| <b>MX36NTYA</b> | Yellow Toner Cartridge        |
| <b>MX36NVBA</b> | Black Developer               |
| <b>MX36NVSA</b> | Cyan/Magenta/Yellow Developer |
| <b>MX36NRSA</b> | Drum                          |
| <b>MX230HB</b>  | Toner Collection Container    |

<sup>1</sup> Some features may require optional equipment and/or software.

<sup>2</sup> May vary depending on product configuration, machine settings and operating and/or environmental conditions.

<sup>3</sup> Actual transmission time will vary based on line conditions.

<sup>4</sup> Based on Sharp Standard Test Chart with approximately 700 characters, letter size in standard resolution.

<sup>5</sup> Not available at time of launch.

<sup>6</sup> Available Q4 2012.



Design and specifications subject to change without notice. Sharp, Sharp OSA, Sharpdesk, My Sharp, and all related trademarks are trademarks or registered trademarks of Sharp Corporation and/or its affiliated companies. Windows, Windows Server and Windows Vista are trademarks or registered trademarks of Microsoft Corporation. All other trademarks are the property of their respective owners.

the **SHARP** experience

see what happens

**SHARP**